

Schottky Diode Gen ²

preliminary

$$V_{RRM} = 60V$$

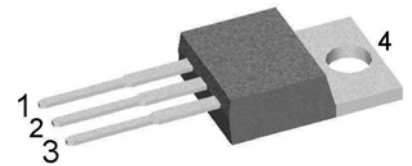
$$I_{FAV} = 2x \ 30A$$

$$V_F = 0.77V$$

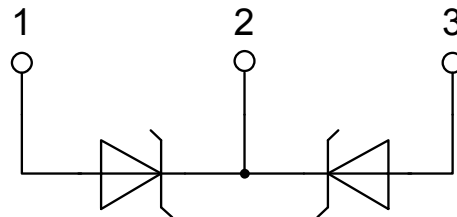
High Performance Schottky Diode
Low Loss and Soft Recovery
Common Cathode

Part number

DSA60C60PB



Backside: cathode

**Features / Advantages:**

- Very low V_f
- Extremely low switching losses
- Low I_{rm} values
- Improved thermal behaviour
- High reliability circuit operation
- Low voltage peaks for reduced protection circuits
- Low noise switching

Applications:

- Rectifiers in switch mode power supplies (SMPS)
- Free wheeling diode in low voltage converters

Package: TO-220

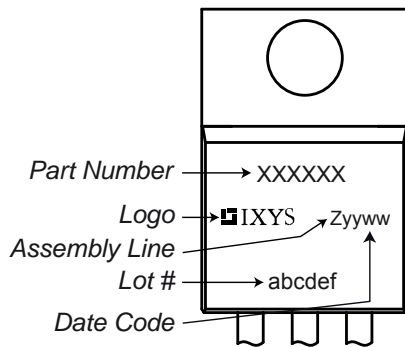
- Industry standard outline
- RoHS compliant
- Epoxy meets UL 94V-0

Schottky				Ratings			
Symbol	Definition	Conditions		min.	typ.	max.	Unit
V_{RSM}	max. non-repetitive reverse blocking voltage			$T_{VJ} = 25^{\circ}C$		60	V
V_{RRM}	max. repetitive reverse blocking voltage			$T_{VJ} = 25^{\circ}C$		60	V
I_R	reverse current, drain current	$V_R = 60 V$		$T_{VJ} = 25^{\circ}C$		450	μA
		$V_R = 60 V$		$T_{VJ} = 125^{\circ}C$		5	mA
V_F	forward voltage drop	$I_F = 30 A$		$T_{VJ} = 25^{\circ}C$		0.92	V
		$I_F = 60 A$				1.17	V
		$I_F = 30 A$		$T_{VJ} = 125^{\circ}C$		0.77	V
		$I_F = 60 A$				1.00	V
I_{FAV}	average forward current	$T_c = 155^{\circ}C$	rectangular	$T_{VJ} = 175^{\circ}C$		30	A
V_{FO}	threshold voltage			$T_{VJ} = 175^{\circ}C$		0.49	V
r_F	slope resistance					6.8	m Ω
		} for power loss calculation only					
R_{thJC}	thermal resistance junction to case					0.85	K/W
R_{thCH}	thermal resistance case to heatsink				0.50		K/W
P_{tot}	total power dissipation			$T_c = 25^{\circ}C$		175	W
I_{FSM}	max. forward surge current	$t = 10 ms; (50 Hz), sine; V_R = 0 V$		$T_{VJ} = 45^{\circ}C$		450	A
C_J	junction capacitance	$V_R = 12 V$	$f = 1 MHz$	$T_{VJ} = 25^{\circ}C$		449	pF

preliminary

Package TO-220			Ratings			
Symbol	Definition	Conditions	min.	typ.	max.	Unit
I_{RMS}	RMS current	per terminal ¹⁾			35	A
T_{VJ}	virtual junction temperature		-55		175	°C
T_{op}	operation temperature		-55		150	°C
T_{stg}	storage temperature		-55		150	°C
Weight				2		g
M_D	mounting torque		0.4		0.6	Nm
F_C	mounting force with clip		20		60	N

Product Marking



Part number

- D = Diode
- S = Schottky Diode
- A = low VF
- 60 = Current Rating [A]
- C = Common Cathode
- 60 = Reverse Voltage [V]
- PB = TO-220AB (3)

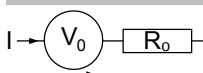
Ordering	Part Number	Marking on Product	Delivery Mode	Quantity	Code No.
Standard	DSA60C60PB	DSA60C60PB	Tube	50	507143

Similar Part	Package	Voltage class
DSA60C60HB	TO-247AD (3)	60

Equivalent Circuits for Simulation

* on die level

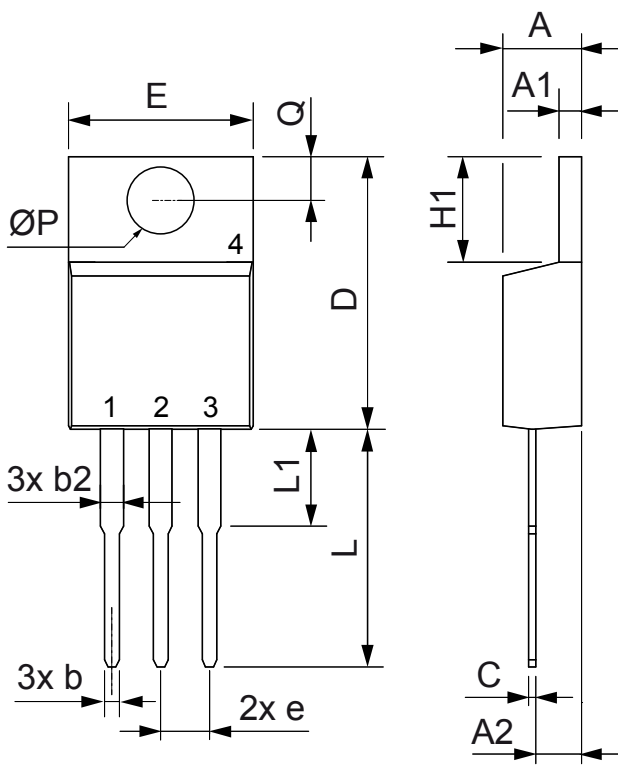
$T_{VJ} = 175\text{ °C}$



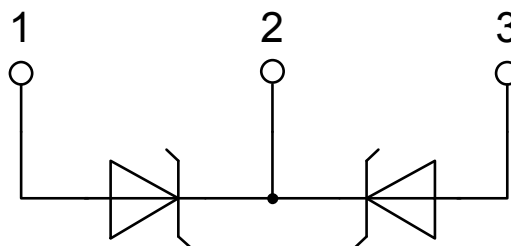
Schottky

$V_{0\ max}$	threshold voltage	0.49	V
$R_{0\ max}$	slope resistance *	3.6	mΩ

Outlines TO-220



Dim.	Millimeter		Inches	
	Min.	Max.	Min.	Max.
A	4.32	4.82	0.170	0.190
A1	1.14	1.39	0.045	0.055
A2	2.29	2.79	0.090	0.110
b	0.64	1.01	0.025	0.040
b2	1.15	1.65	0.045	0.065
C	0.35	0.56	0.014	0.022
D	14.73	16.00	0.580	0.630
E	9.91	10.66	0.390	0.420
e	2.54	BSC	0.100	BSC
H1	5.85	6.85	0.230	0.270
L	12.70	13.97	0.500	0.550
L1	2.79	5.84	0.110	0.230
$\varnothing P$	3.54	4.08	0.139	0.161
Q	2.54	3.18	0.100	0.125



Mouser Electronics

Authorized Distributor

Click to View Pricing, Inventory, Delivery & Lifecycle Information:

[IXYS:](#)

[DSA60C60PB](#)